

PN : 441110 110V 441120 110V
441220 220V 441225 220V

Introduction

► Feature

| | |
|-------------------|--|
| Lifting capacity: | 1,000 kg |
| Lifting height: | 3 m |
| Line speed: | 3.2 m/min |
| Motor output: | 750w x 9.5A at 100-120V ; 750w x 4.5A at 200-240V |
| Brake: | Dual brakes of double mechanical ratchet pawls and a motor dynamic brake |
| Control: | Pendant switch powers the hoist |

► Unpacking

| | |
|--|-----|
| • Hoist assembly | 1pc |
| • Load chain 6.3 mm x 6.5 m w/hook block | 1pc |
| • Power lead 2.0 mm ² x 3C x 3m w/2 flat pins plug for PN:441110.441225 | 1pc |
| • Power lead 1.5 mm ² x 3C x 3m w/3 round pins plug for PN:441120.441220 | 1pc |
| • Pendant switch PB-317 w/cord 1.25 mm ² x 6C x 3m | 1pc |

► Read this manual carefully

You should carefully read and understand this manual before operating it. Careless winch operation may result in personal injury hazards or property damage.

► Information requesting or parts ordering

Please specify the followings information:

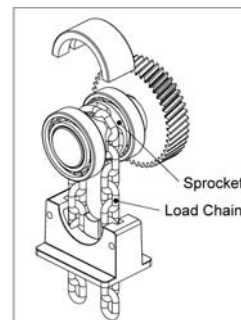
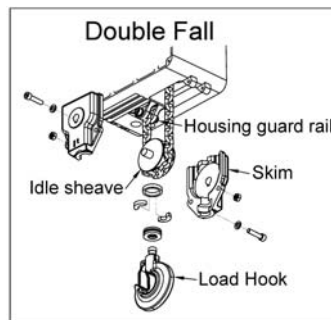
- | | |
|--------------------|---------------------------|
| • Hoist PN | • Replacement part number |
| • Serial number | • Quantity for each part |
| • Part description | |

Installation

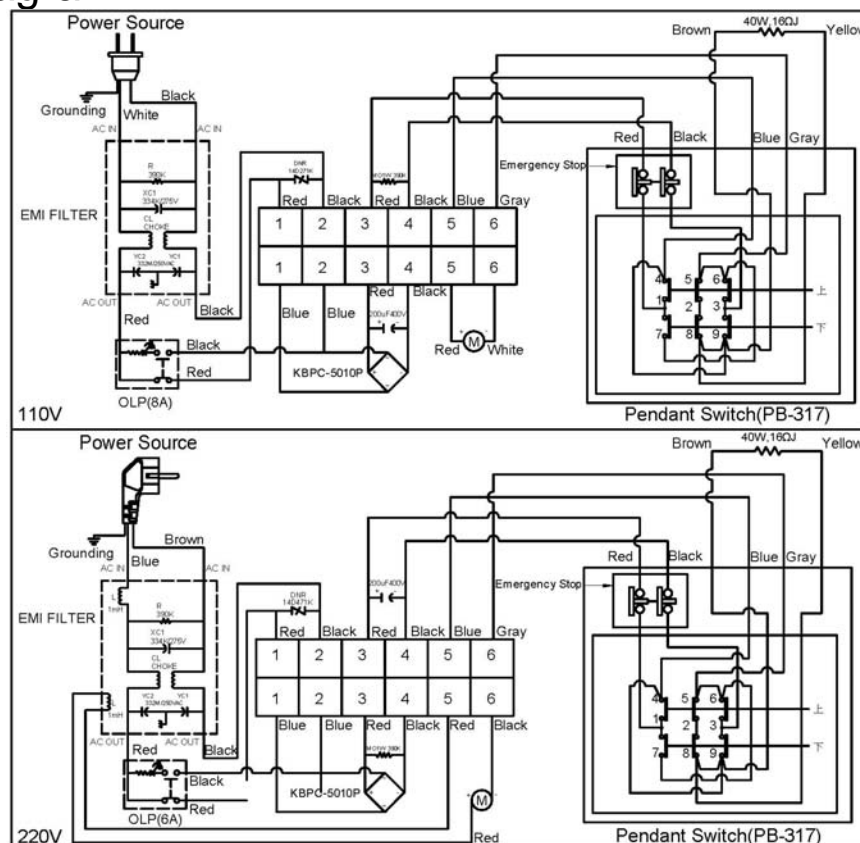
Before using the hoist, make sure all electrical components have no corrosion or damaged; the environment should be clear and dry.

► Load Chain Replacement

- 1). Be sure that the replacement chain is the exact size, grade and constructions as the original chain. The new load chain must have an odd number links so that both its end links have the same orientation. Destroy the old chain to prevent its reuse.
- 2). When replacing load chain, check for wear on mating parts such as sprocket , and replace parts if necessary.
- 3). Remove all chain components including load hook kit from the old chain for reuse on new chain. Inspect and replace any damaged or worm parts.
- 4). Feed the end link on the load side of the new chain through the require chain components and idle sheave of load hook. Attach the remaining chain components to the chain guide rail for the proper locations.
- 5). Operate the hoist down to move the chain through the hoist body. Stop when a sufficient amount of new chain is accumulated on the load side.



► Wiring Diagram



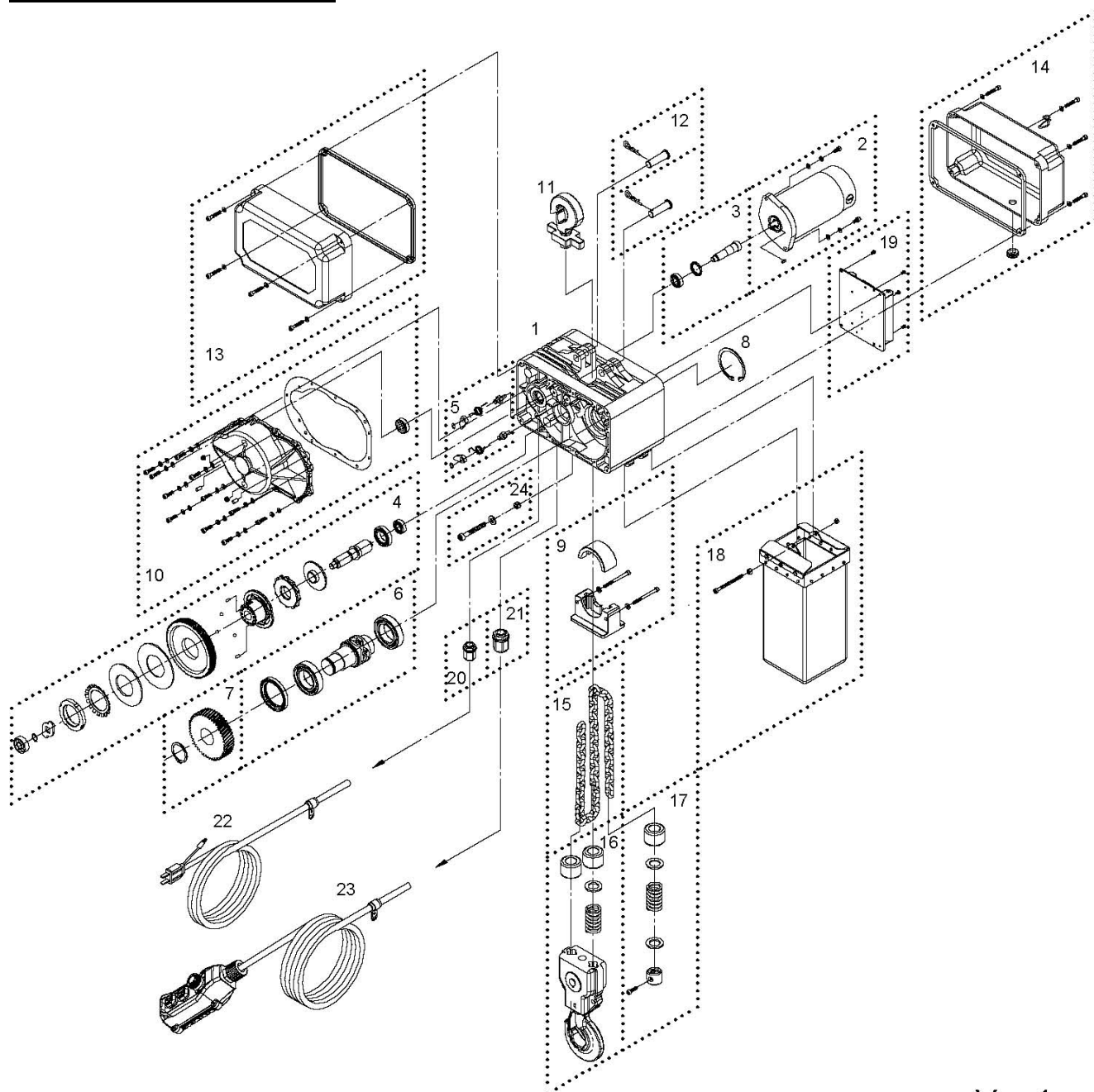
Warning

- The winch is not intended to be used in any manner for the movement or lifting of personnel.

Parts List

| Item No. | Description | Part No. | Qty |
|----------|--|----------|-----|
| 1 | Gear box | 881789 | 1 |
| 2 | Motor kit 110V | 881790 | 1 |
| | Motor kit 220V | 881791 | |
| 3 | 1 st pinion kit | 881792 | 1 |
| 4 | 1 st gear kit | 881793 | 1 |
| 5 | Ratchet stopper kit | 881794 | 2 |
| 6 | Sprocket kit | 881795 | 1 |
| 7 | 2 nd gear kit | 881858 | 1 |
| 8 | R-type retaining ring | 881867 | 1 |
| 9 | Sprocket protector kit | 881796 | 1 |
| 10 | Brake rear cover kit | 881797 | 1 |
| 11 | Hook suspension | 881798 | 1 |
| 12 | Head pin | 881799 | 1 |
| 13 | Gearbox rear cover kit | 881857 | 1 |
| 14 | Electric cover kit | 881800 | 1 |
| 15 | Load chain 6.5 m | 881802 | 1 |
| 16 | Hook block | 881804 | 1 |
| 17 | Lift limiter | 881805 | 1 |
| 18 | Chain bag kit | 881806 | 1 |
| 19 | Control panel 110V | 881807 | 1 |
| | Control panel 220V | 881808 | |
| 20 | Cable gland AG-16 | 881809 | 1 |
| 21 | Cable gland AG-20 | 881810 | 1 |
| 22 | Power lead w/2 flat pins plug 110V/220V | 881811 | 1 |
| | Power lead w/3 round pins plug 110V/220V | 881812 | 1 |
| 23 | Remote control, PB-317 | 881813 | 1 |
| 24 | Fix bolt kit | 881859 | 1 |

Hoist Assembly



Ver:4